

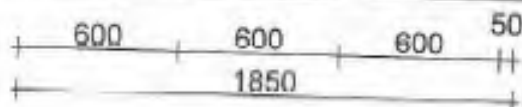
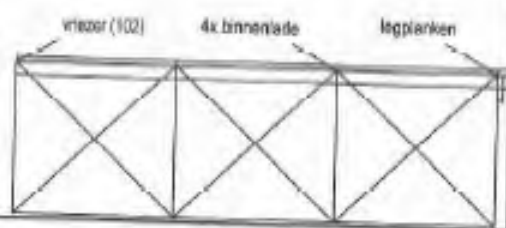
blad 600*

ca 1300*

blad 1000*

ca 1300*

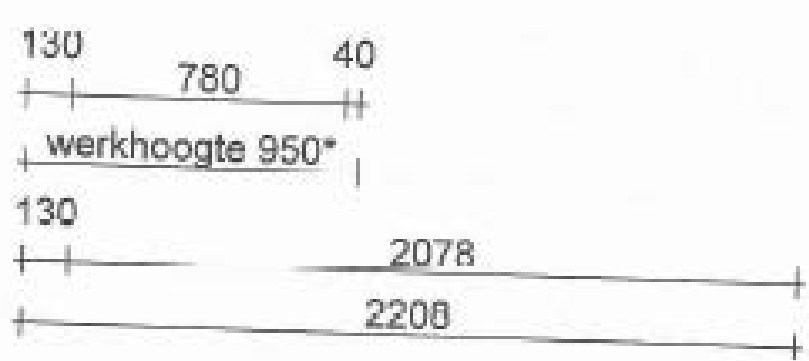
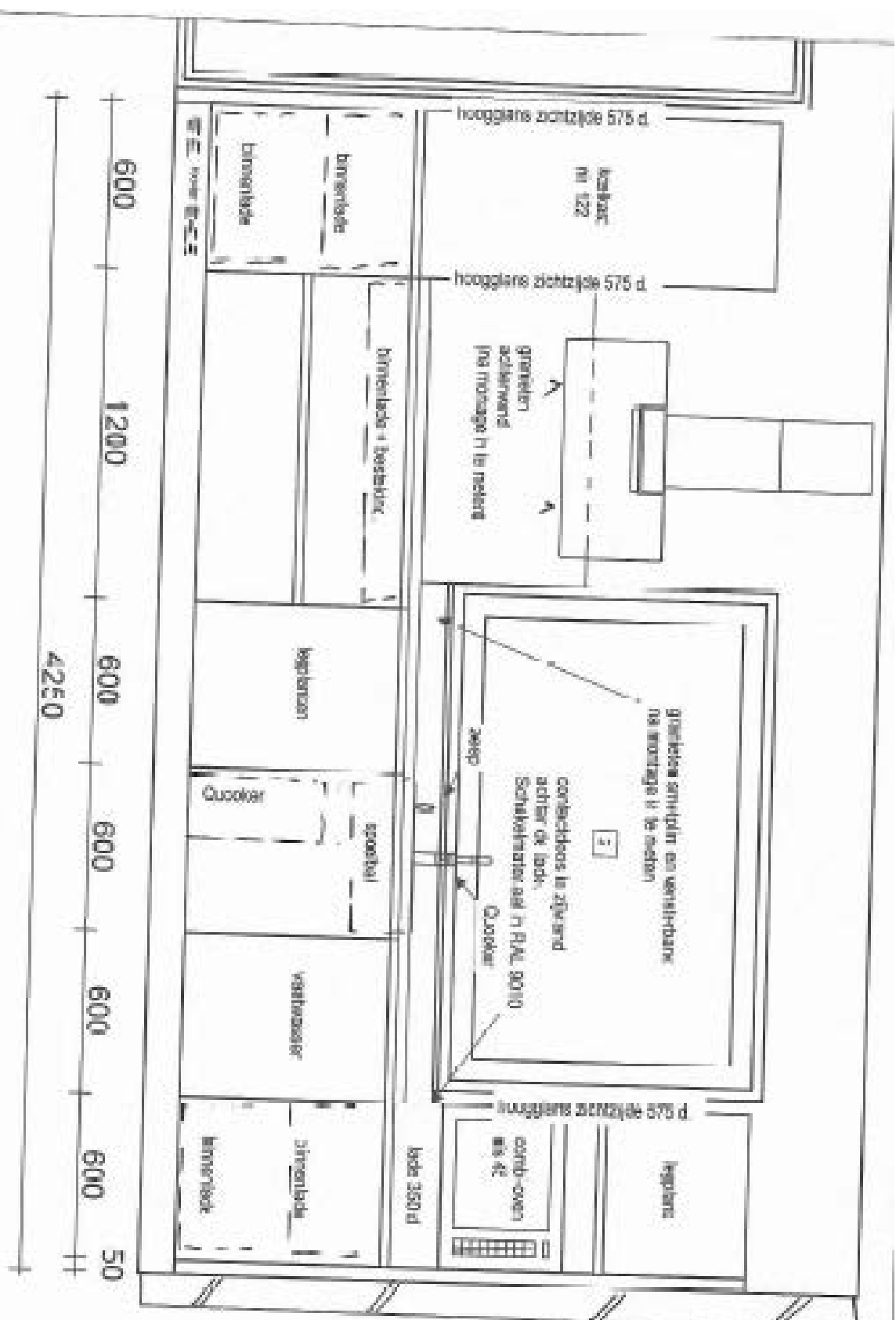
600*

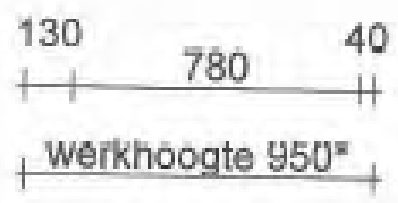
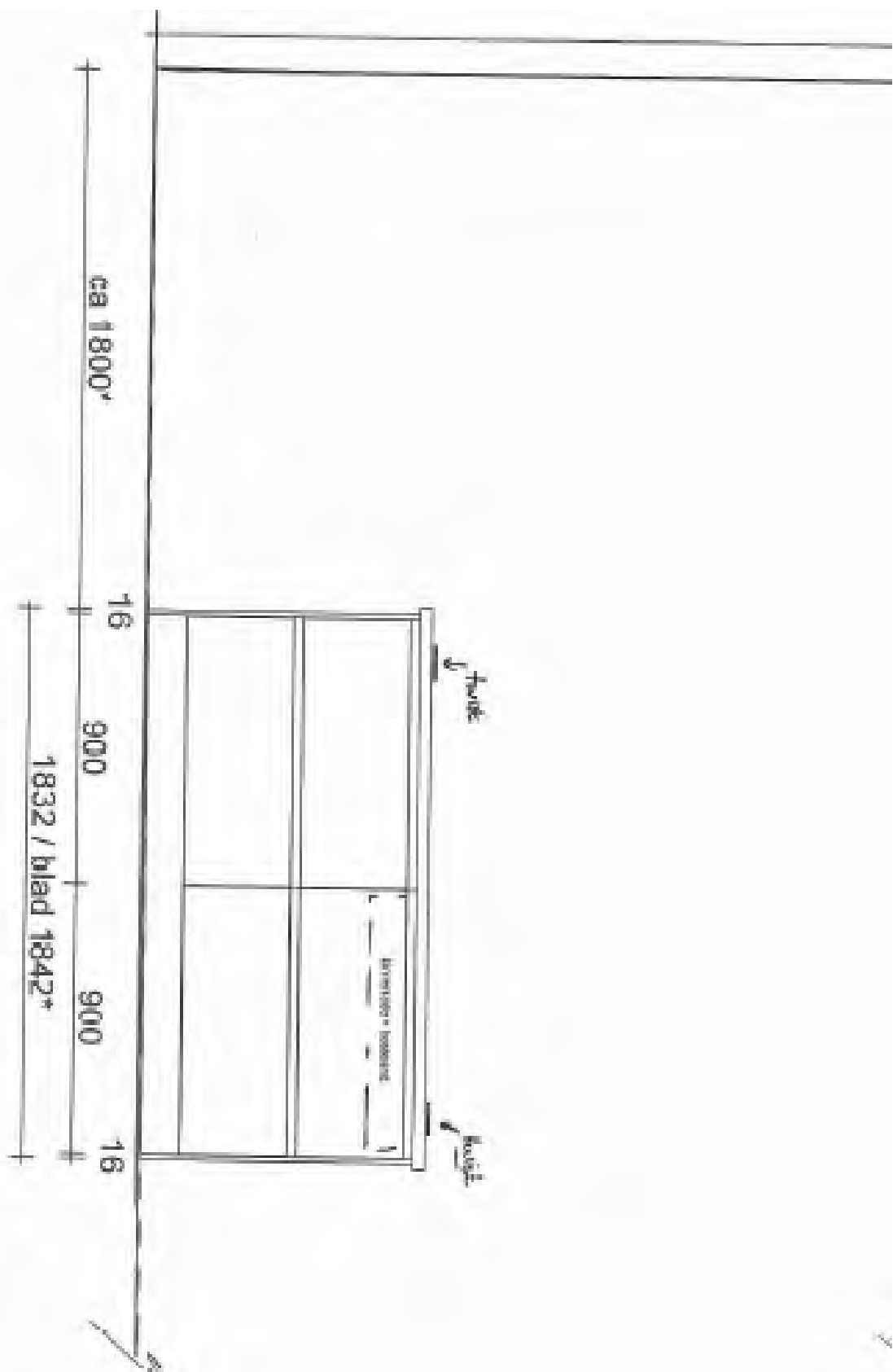


5

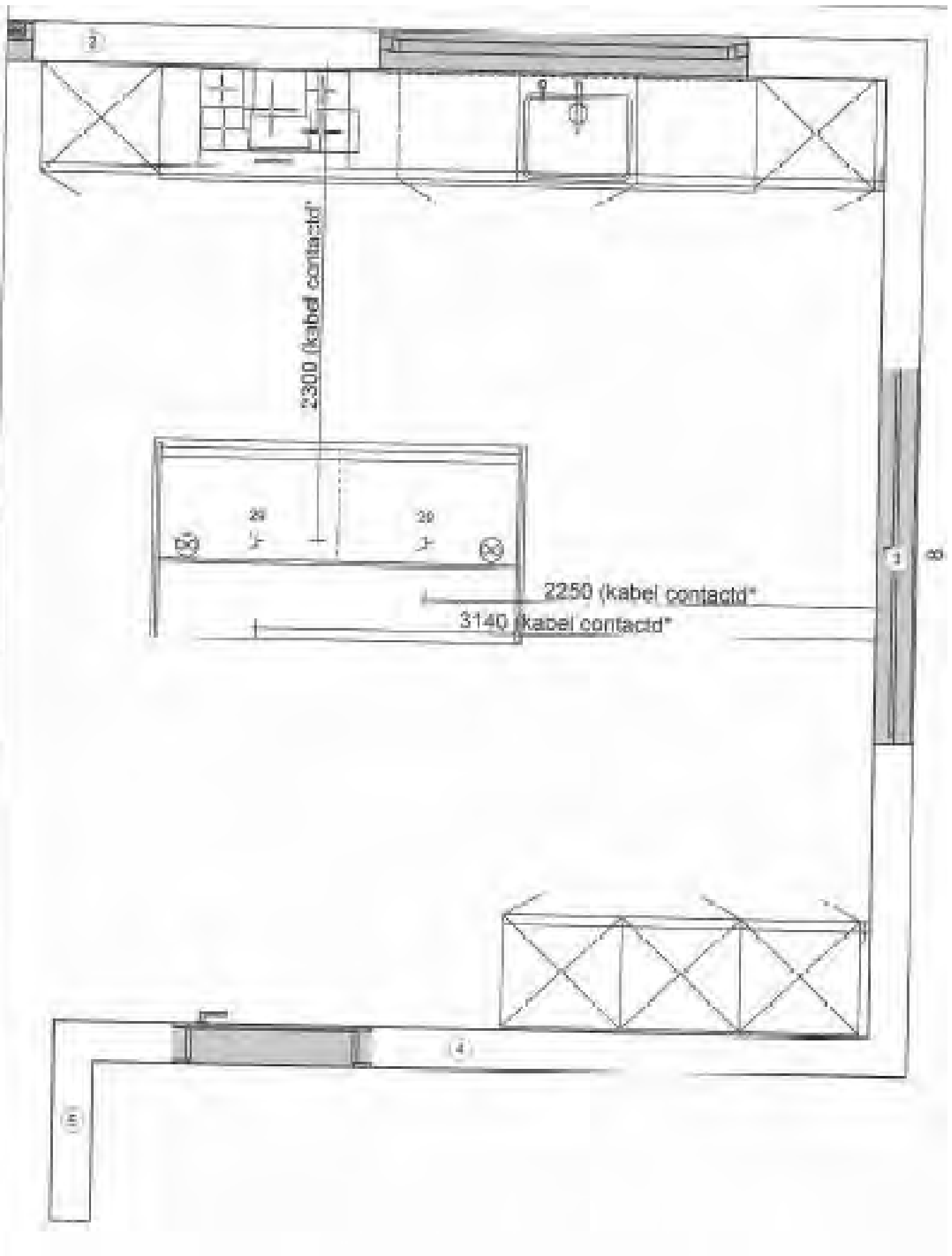
4

3



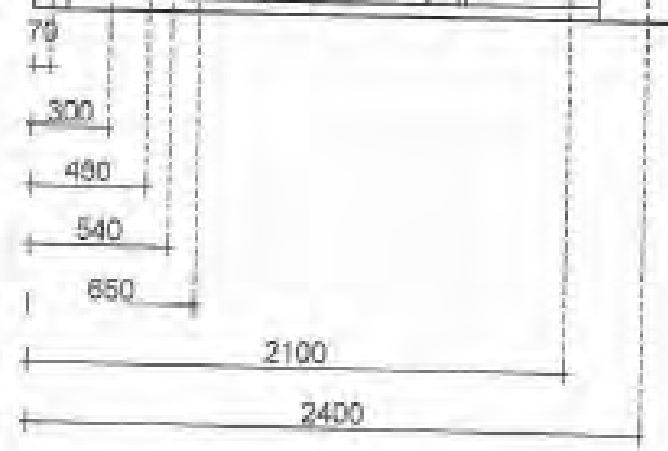
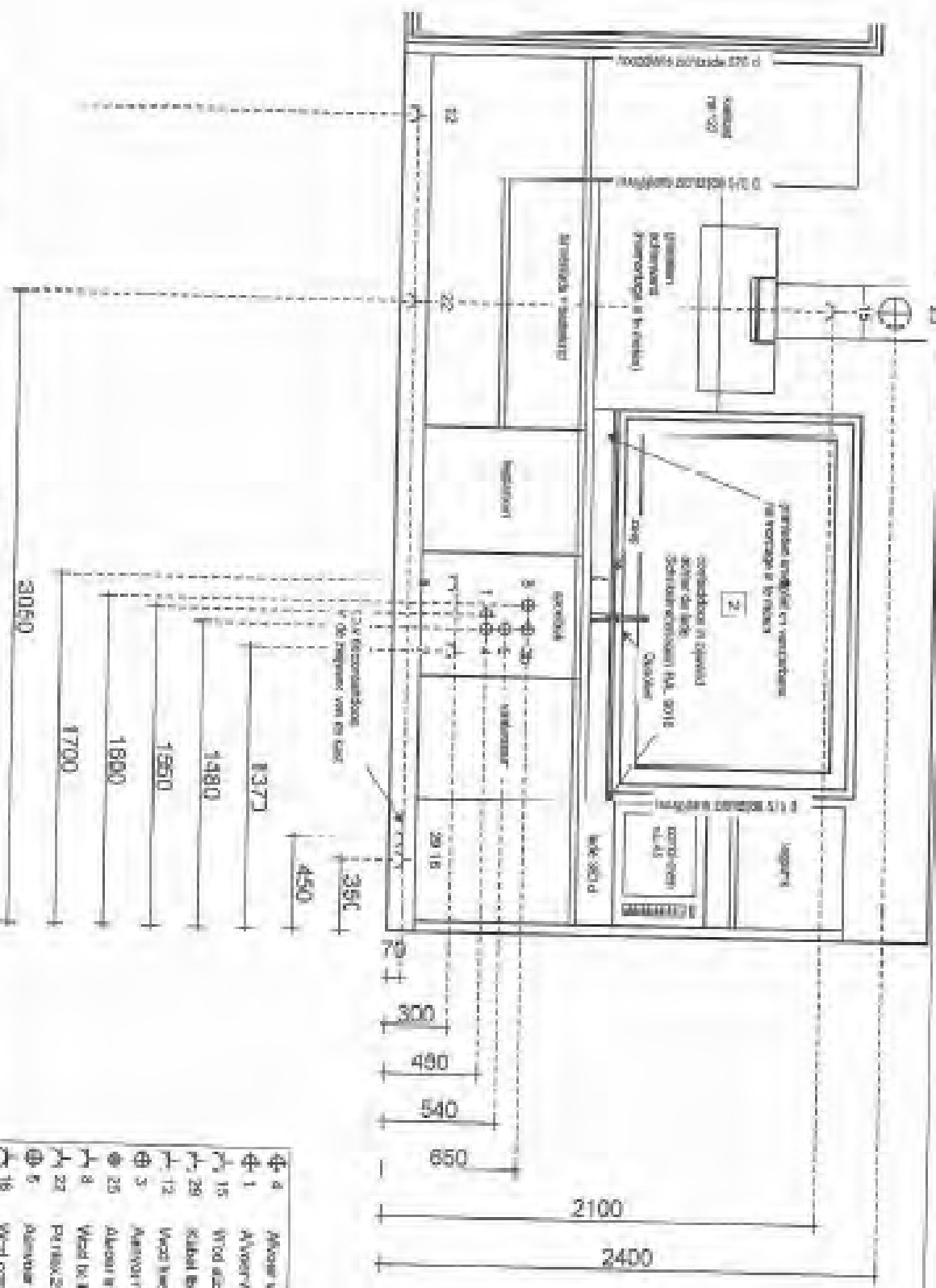






Per maggiori informazioni è possibile scrivere alle seguenti e-mail: info@bionotica.it o info@bionotica.com

39450
3050
1700
1800
1950
1980
1837,1
450
350



⌀ 4	Alcove ventilatore 40 mm
⌀ 1	Aerovetro 40 mm
⌀ 15	VFD accoppiato 280W
⌀ 29	Schedario, metallo corrosivo
⌀ 12	Wood biochimico 110W
⌀ 3	Aerovetro 40 mm
⌀ 25	Alcove scrivania 100 mm
⌀ 8	Wood biochimico 2,3 kW
⌀ 22	Per il 2° stadio (Schedario, 7,5 kW)
⌀ 5	Alcove tavolo vetro ventilatore
⌀ 16	VFD control-vetro 1,2 kW
⌀ 30	Alcove tavolo Schedario
⌀ 7	Wood ventilatore 1,3 kW

