

Autopareri > automotive Houses > Italian Cars > Romeo

Alpha

alpha 159 q4 Vs 164 Q4

Name customer It remembers to me?

Password

[It records to you](#)

[FAQ](#)

[Community](#)

[Directory customers](#)

[The messages today](#)

[Calendar](#)

[Search](#)

ANNOUNCEMENTS GENERATE THEM: You decide as she will go to end the world-wide [Clicca here!](#). For having more information: [clicca here!](#)

 **rispondi**

H | Page 7 of 12 < 1 2 3 4 5 6 **7** 8 9 10 11 12 >

[Instruments argument](#) [It tries in this argument](#) [Way of visualization](#)

05/05/06, 00.22

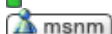
#61


lorenzo78

Manager Team



Enrolled from: 19/02/05
 Messages: 4.099



 **King: alpha 159 q4 Vs 164 Q4**


bitree sincerely to me and many others of the q4 and the speeches that I read here on I am Benedict q4 frega little... to the piu' interests that the car goes strong... therefore smettero' never not to say that q4 not the servants to one cippa 😊

Car attuale:bmw 320d touring 150cv
 Your next auto:a posterior traction
 Moto:honda pantheon to posterior traction



If guides a Smart you can always say that you have a Cayenne..... If instead guides one Point you cannot say a cabbage (Ranzani docet) 😊😊😊😊😊

**"Who goes flat slows down also you, digli to stop"
 When it ends the adhesion begins the divertimento...**

 **riporta**

05/05/06, 00.22

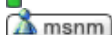
#62


lorenzo78

Manager Team



Enrolled from: 19/02/05
 Messages: 4.099



 **King: alpha 159 q4 Vs 164 Q4**

It cites:

Written in origin from **PaTaT0306**
The barrette are ended of Kellogs special K.. And mo that I make..... 😊

daje de crepes... 😊

Car attuale:bmw 320d touring 150cv
 Your next auto:a posterior traction
 Moto:honda pantheon to posterior traction





If guides a Smart you can always say that you have a Cayenne..... If instead guides one Point you cannot say a cabbage (Ranzani docet) 😊😊😊😊😊

**"Who goes flat slows down also you, digli to stop"
When it ends the adhesion begins the divertimento...**



05/05/06, 00.57

#63

LucioFire

Leader of the championship

Enrolled from: 19/11/04
Messages: 1.395

King: alpha 159 q4 Vs 164 Q4

It cites:

Written in origin from **PaTaTO306**
Ax!!! But at least audios in the race have carried it and something has won! Even if as soon as ended itself on fast automobile race tracks medium Alfa and Bmw to the A4 they passed they over!!!!!! But this will want to say something! That with powers of approximately 300cv the integral traction servants to one it does not saw if not on deep to low adhesion (type rain) and STOP!!

to me it turns out that the 155 integral has gained something....



The FIRE has always ragione(7250rpm)



05/05/06, 01.04

#64

PaTaTO306

Promised Young person



Enrolled from: 21/03/05
Locality: Rome
Messages: 489



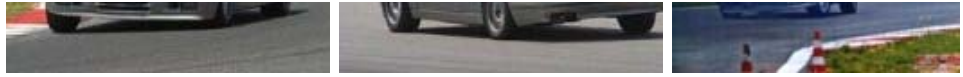
King: alpha 159 q4 Vs 164 Q4

It cites:

Written in origin from **LucioFire**
to me it turns out that the 155 integral has gained something....

Why for you the dtm it has some meant on the mass production... They are prototypes in all and for all and cmq they had approximately 450cavalli and I have spoken about powers above all around to the 300cv (and he does not change least) without null removing Mercedes who HOWEVER ran with the posterior one and me she does not seem had all these problemoni to also strike it they...





Motor M3 2.5I EVO2 257km/h to 8000g/m -- farfallati from 45, telephone exchange, cammes from race, rotary parts balanced and lightened, differentiates them self-locking, clutch in branch and change ZF

Video of "Ringhio" to the ISAM <http://video.google.com/videoplay?do...658078&q=320is>

riporta

05/05/06, 08.59

#65

the FUSED ones

HALL OF HUNGER

Enrolled from: 24/08/03
Locality: La Spezia
Messages: 6.590

King: alpha 159 q4 Vs 164 Q4

Uff now scomodiamo also the 164 Q4.

We remember ourselves that cmq 164 when exited the Q4 he had been available also in version TA of elevated power, on the motors three liters, without the burden of the integral traction.

Having carried (coming down from the 75 I upset) a 164 QV 24 valves (same motor, but nothing traz. integral) I found it "that it could give d+", but was not at all "slow" eh..... and cmq you could choose between Q4 and the three liters 24 valves of the "Super ones".

It does not seem to me that however that one could be said null on the weight of a flagship (was the flagship, this 159 not) in "the normal" versions, that is the V6 I upset, the Super V6 24v and 12v, the TS.....

For which we re-establish the things to way..... beyond to the critic of the weight of the 159 Q4 is ALSO the critic of the weight of the 159 normal schools, while of the 164 Q4 could also be said of the weight, while of the 164 normal school did not say.

Made Al.di.lÃ .del that one is better of the other, I do not come down in the detail.

Perintanto people "with of the manico" and reading BMW 325ix on the Cisa if Q4 is seen to give to them of Saint reason just from one 164.....

' 80 Alfasud 1.2

' 82 Alfetta 2.0

' 05 new 147 JTD Distinctive 3pt. 115cv - 06/2005 - 38500 km and AT THIS POINT HATRED I WANT the GOLF!



Race Alpha sempiterna.....

riporta

05/05/06, 09.16

#66

stirling

Promised Young person

Enrolled from: 19/12/03
Locality: in car
Messages: 366

King: alpha 159 q4 Vs 164 Q4

It cites:

Written in origin from **lorenzo78**
but perche' the 164 were beautiful fatemi to understand....? 😊😊😊😊😊😊

beh, detention remaining that observing it now nearly 20 years ago unfortunately pain, opportunely Pininfarina made a great job also being limited from the usual turn common door of Cromia/Thema/Saab9000.

in fact the 164 for those times then great beautiful elegant stiff line and much, sure one little supported from an assemblage to the limits of the ridicule had one and one little guessed style of the inner ones. sin also for then mania using that posterior strip for the fanali patrimony also of GTV/Spider and 33 restyling

of sure but it made ecome its figure from sport flagship regarding Thema, discreet to my opinion it was also the restyling to Super, even if by now the sales were not more those than once

if not it would be from criticizing Peugeot 605 that the same to the 164 almost hands designed equal some year after but...

The Q4 seppur with an integral traction of excellence would not be exited therefore ugly not even if it had produced the Lester to it...

Hodie mihi, cras tibi



05/05/06, 09.19

#67

the FUSED
ones

HALL OF HUNGER

Enrolled from:
24/08/03
Locality: La Spezia
Messages: 6.590

King: alpha 159 q4 Vs 164 Q4

To part that the aesthetic judgments are most personal..... why as an example to me the formulation of the 164 appeals to very still now, and must say that I decidedly prefer it to the 166 as an example.....

' 80 Alfasud 1.2

' 82 Alfetta 2.0

' 05 new 147 JTD Distinctive 3pt. 115cv - 06/2005 - 38500 km and AT THIS POINT HATRED I WANT the GOLF!



Race Alpha sempiterna.....



05/05/06, 09.37

#68

Tony156
Official Pilot

Enrolled from: 29/04/03
Locality: Puglia
Messages: 719

King: alpha 159 q4 Vs 164 Q4

It cites:

Written in origin from **the FUSED ones**
To part that the aesthetic judgments are most personal..... why as an example to me the formulation of the 164 appeals to very still now, and must say that I decidedly prefer it to the 166 as an example.....

I behind agree with that snout intimidated 166 to level of design IMHO and 3 steps regarding 164. They had made with the new snout something in + would have sold.



05/05/06, 09.37

#69

duetto80

King: alpha 159 q4 Vs 164 Q4

duetto80
Manager Team



Enrolled from: 15/10/03
Locality: Milan
Messages: 4.553

King: alpha 159 q4 vs 164 Q4

For me the line of 164 very well interpreted the sport flagship, until then that what was the seg and?

Of the berlinoni and stop, than what it gave MB? the 124 best of 123 but always taxis, BMW? the nth rifacimento of the 5XX years 70.

Audios had pulled outside the aereodinamico model of 100..... ma negli to leave to lose.

A 3V did not exist sport in that segment, 10 years before was 2V (the Rover, Range, R20-30) but they were ended.

Alpha with 164 has opened the tradition of the sedans from the sport line that today is interpreted from CLS and it it will be from future 169.

For years 80 it was (comparing it to the competition) nearly coupÃ 4 doors.

It has marked one carried out.



riporta

05/05/06, 09.42

#70

stirling
Promised Young person

Enrolled from: 19/12/03
Locality: in car
Messages: 366

King: alpha 159 q4 Vs 164 Q4

It cites:

Written in origin from **the FUSED ones**
To part that the aesthetic judgments are most personal..... why as an example to me the formulation of the 164 appeals to very still now, and must say that I decidedly prefer it to the 166 as an example.....

I agree, in fact the comment collects the possible generalista judgment of a motorist of 2006 who now watches with the tastes and mode one sedan of 19 years ago...

taken in its within it has a inimitabile line, as in its semplicitÃ it was the much beautiful also Thema (pre-restyling)

Hodie mihi, cras tibi

riporta

rispondi

H | Page 7 of 12 < 1 2 3 4 5 6 **7** 8 9 10 11 12 >

" [previous Argument](#) | [Home](#) | [Top](#) | [Next argument](#) "

Rules of writing

You **cannot** open new arguments
You **cannot** answer to the messages

You **cannot** insert you enclose to you
You **cannot** modify your messages

The code vB is **On**
The emoticons are **On**
Code [IMG] Å© **On**
Code HTML is **Off**

All the timetables are GMT +2, Hour are the 21.51.

[It contacts](#) - [Autopareri](#) - [the Archives to us](#) - [You go in top](#)

Powered by vBulletin Version 3.5.4
Copyright ©2000 - 2006, Jelsoft Enterprises Ltd.
Italian translation edited by OsMoSiS - www.nitroitalia.com
SEO by vBSEO 2.4.0

Autopareri the portale of the Car by Internet Diffusion

[HOME](#) | [FORUM](#) | [THE ARCHIVES FORUM](#) | [USED CARS/SALE](#) | [LINKS](#) | [F1 SHOP](#)
[Moteurs de recherche](#) - [Referencement Suisse](#) - [Pitstop](#)
Partners: [Visioconference](#)